

PUGET SOUND

National Estuary Program

North Fork Stillaguamish Integrated Floodplain Management

This project will produce four reach-level plans to address salmon, agriculture and flood risk reduction efforts in the North Fork Stillaguamish Watershed.

What we're doing

We are writing one plan that links natural conditions to opportunities to benefit salmon, agriculture and flood risk reduction so that the projects associated with this effort have the greatest chance for success and are supported by the communities in this area.



Flood risk reduction is one facet of Integrated Floodplain management. Pictured: flooded farmland.

How we're doing it

We are working with partners and consultants to address community needs in these planning documents by engaging stakeholder groups that focus on salmon, agriculture and flooding within the North Fork Stillaguamish.

WHY IS THIS ISSUE IMPORTANT?

We have found that projects that address multiple benefits are more widely supported by the people who have the most at stake.



Benefits to salmonids (pictured) is another value considered in Integrated Floodplain Management.

WHAT YOU CAN DO

- Attend a community meeting and share your views
- Volunteer with our many groups doing restoration projects in Snohomish County
- Support the state and federal programs that help salmon, agriculture and flood risk reduction

ABOUT OUR ORGANIZATION

Snohomish County Surface Water Management (SWM) is a division of the Public Works Department. SWM is a stormwater utility that provides essential services related to management of surface water.

FOR MORE INFORMATION

<http://snohomishcountywa.gov/3808/Reach-Based-Plans>

Donald "Kit" Crump

Snohomish County, Surface Water Management

Donald.crump@snoco.org

425-262-2586

Project Based on NTA 2018-0249



North Fork Stillaguamish Integrated Floodplain Management

This project produced the final North Fork Stillaguamish River Reach-scale Plan to address fish, farm and flood issues and opportunities in Snohomish County.

Project outcomes

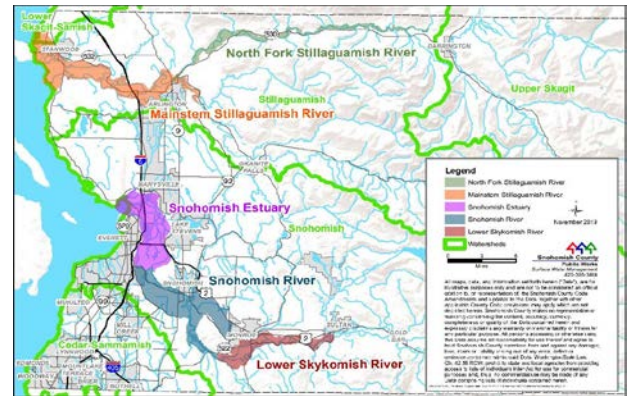
- Completed the [North Fork Stillaguamish Reach-scale Plan](#) -- this is the final plan in the series, which includes the Mainstem Stillaguamish, Lower Skykomish, Snohomish River and Snohomish Estuary plans
- Completed an ESRI-based [Story Map](#) specific to the North Fork Stillaguamish River or “Stilly”
- Updated the Reach-scale Plan [interactive GIS mapping tool](#) which covers all the planning areas



Large Woody Debris (LWD) Juvenile Rearing Habitat for Salmon

Success stories

Large scale projects in the estuary and floodplain -- including the Trafton Floodplain Restoration, the Cicero Floodplain Acquisition, and the Rengen Ranch projects -- are starting to take shape to help promote salmon recovery, farming and flood risk reduction in the North Fork Stillaguamish.



Map of Reach Scale Plan Boundaries in Snohomish County

FUTURE OPPORTUNITIES

Snohomish County and its Sustainable Lands Strategy (SLS) partnership are working together to address many of these floodplain challenges in new ways in the Stillaguamish watershed. Community efforts currently underway in the North Fork Stilly all aim to address these flooding, farming and fish habitat concerns.

There is an opportunity to build on the pilot efforts of the Community Floodplain Solutions (CFS) in the Lower Skykomish, to engage landowners in the North Fork Stilly on specific issues in their watershed.

For example, SWM could follow the success of CFS in the Lower Skykomish and produce assessments and modeling in the North Fork Stilly to support future reach-scale plan projects. These tools – including reach-based 2D hydraulic modeling, geomorphic assessments, and climate change scenarios – would inform and help develop a multi-benefit land acquisition strategy.

LINKS

<http://snohomishcountywa.gov/3808/Reach-Based-Plans>

Project based on NTA 2018-0249

